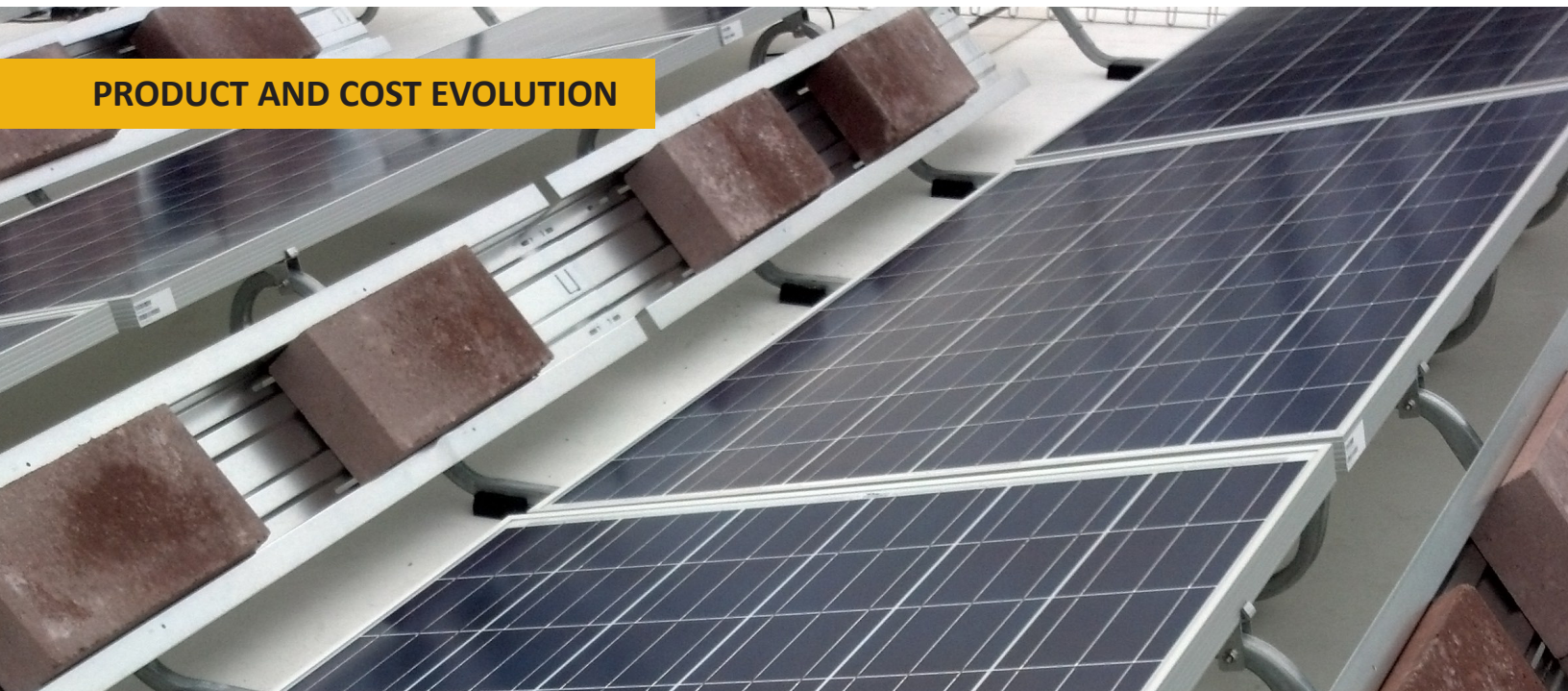


# Polar Bear III

## Flat Roof Mounting System



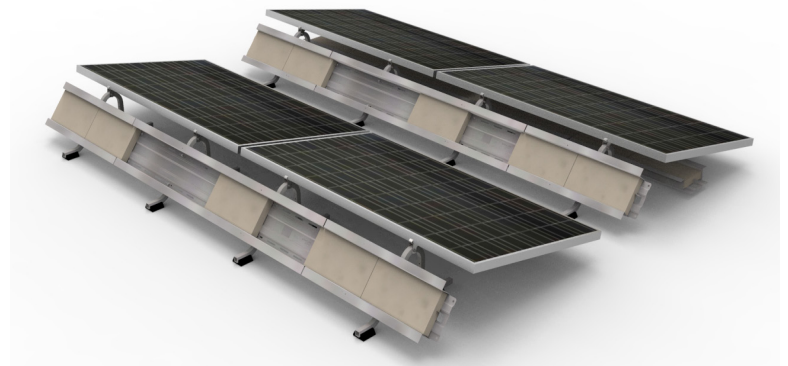
PRODUCT AND COST EVOLUTION



### System Level Approach

Low-cost mounting components provide savings early in the project development process. However, when you are looking to lower the total installed cost, from delivery to a fully wired system, details make the difference. Polar Bear® III combines critical system features, A-to-Z project support, and long-term product reliability into a single low-cost platform. The system components, delivery, and installation procedures have been jointly designed to deliver a lower total cost and better service experience.

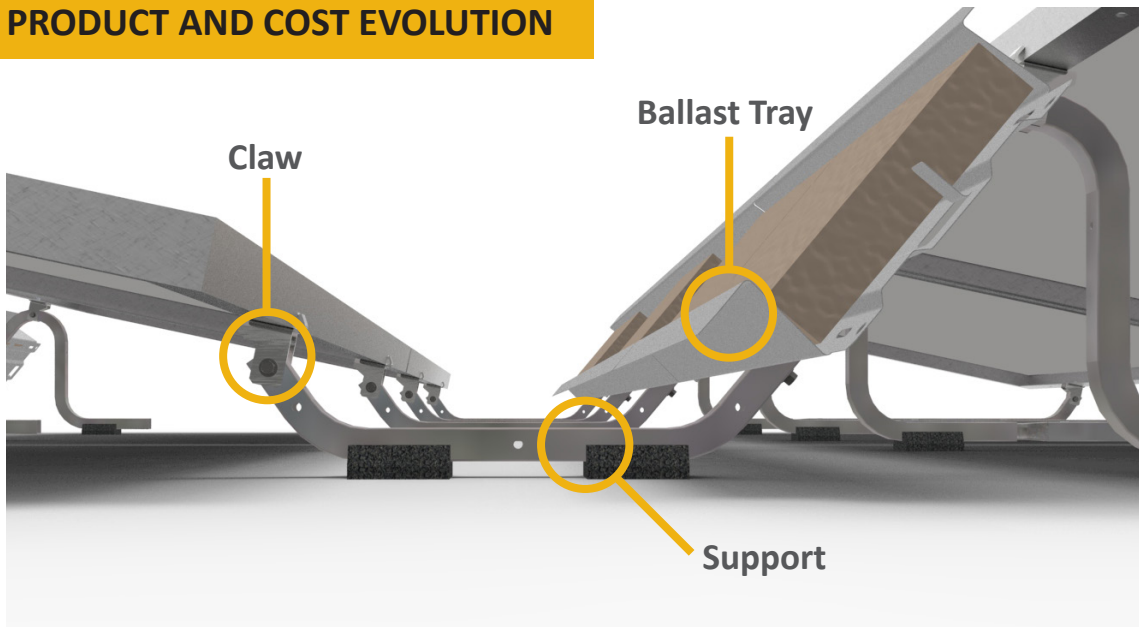
The Polar Bear® III takes the best features, service, and reliability from PanelClaw's earlier flat roof systems and combines them into a single platform.



# Polar Bear III Flat Roof Mounting System 10 Degree



## PRODUCT AND COST EVOLUTION



### Trusted Roof Integrity

Polar Bear<sup>®</sup> III reduces potential long-term roof damage with fully captured ballast, integrated roof protection pads and a system design that allows for free water flow.

### Accelerated Construction

The engineered design emphasizes built-in features to improve construction efficiencies:

- Three major components, light-weight and easy to move
- Pre-installed bolts to quickly mount Ballast Trays
- Single-module tilt-up to facilitate must-have access to roof, wiring and maintenance

### Safety and Reliability

Polar Bear III is the result of PanelClaw's data-driven test program to improve PV reliability. Polar Bear III is proven technology based on hundreds of megawatts of project experience.

### Three Components

#### Support

- Easy-to-handle components that weigh less than 2.5 pounds
- Integrated recycled rubber roof protection pads
- Pre-drilled holes for wire management cabling options

#### Ballast Tray

- Angled fit with locking end-tab to fully capture ballast blocks
- Hemmed edges and chamfered corners prevent wiring from coming into contact with sharp edges

#### Claw

- Attachment to module using standard module mounting holes
- UL 2703 certified for electric bonding and grounding

#### Applications

Flat roof (max slope 5°)

Fully ballasted or mechanically attached

#### Module Tilt Angle

10° nominal

#### Shading Ratio

2.3:1 and 2:7:1

#### Module-to-Module Spacing

21.88" and 18.38"

#### Platform Load

~1.9 - 8 psf

#### Module Orientation

Landscape

#### Module Attachment

Standard module mounting holes

#### Basic Wind Speed

Up to 120 mph  
(>120 mph by approval)

#### Wind Exposure Category

B and C (D by approval)

#### Seismic Compatibility

C, D, E and F

#### Warranty and Certifications

25 year warranty

UL 2703 certification

System Fire Rating  
Class A with Type 1 and  
Type 2 modules



Made in USA

(978) 688.4900 | [info@giplsolar.com](mailto:info@giplsolar.com)



Printed on recycled paper